

SUPPLEMENTARY MATERIALS

Antifibrotic therapies reduce mortality and hospitalization among medicare beneficiaries with idiopathic pulmonary fibrosis

Joshua Mooney, MD; Sheila R Reddy, PhD, MSc, RPh; Eunice Chang, PhD; Michael S Broder, MD, MSHS; Sohun Gokhale, MPH; and Mitra Corral, MS, MPH

Supplementary Table 1. Codes for baseline measures

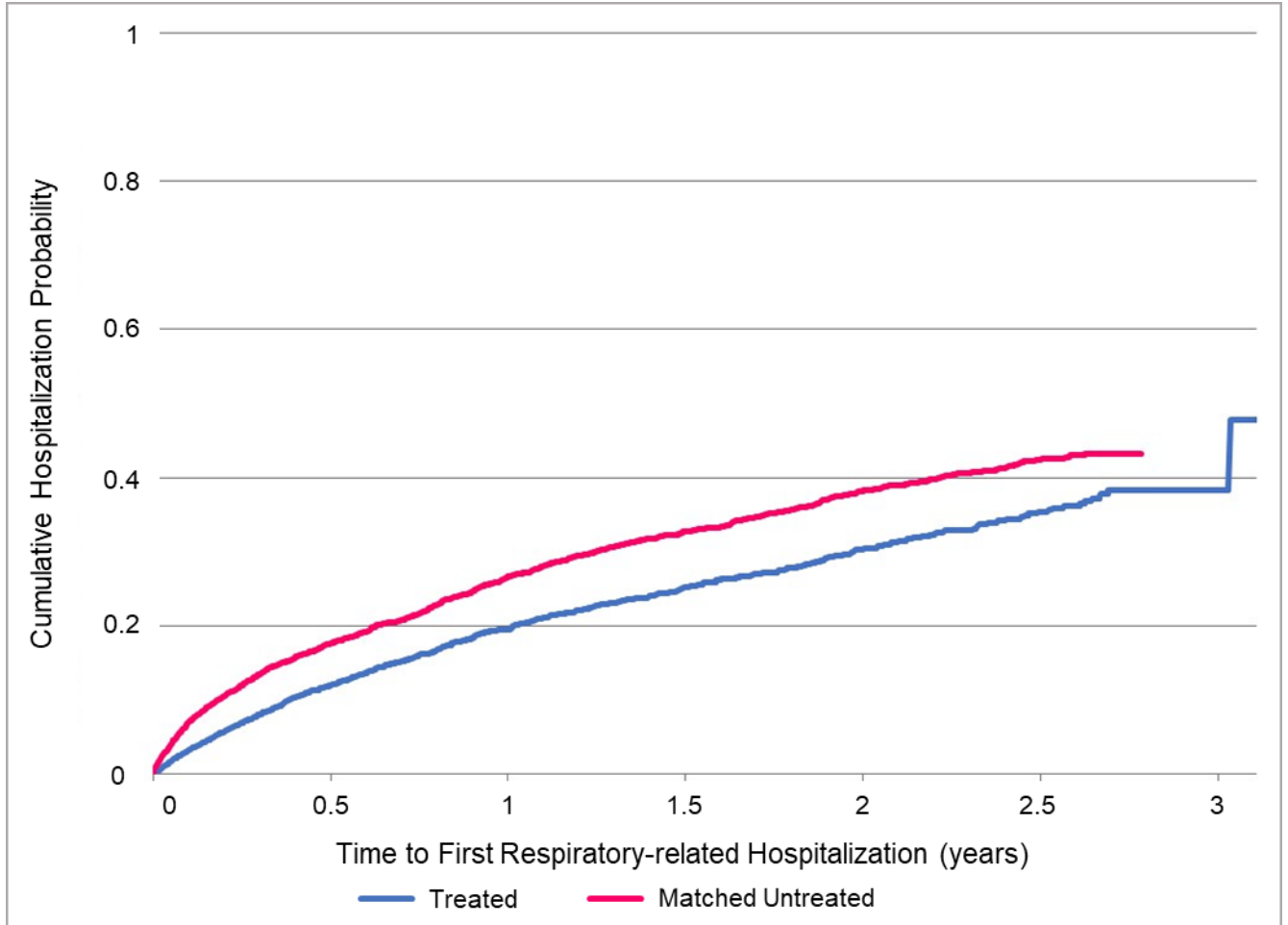
Supplementary Figure 1. Risk of respiratory-related hospitalization

Supplementary Table 1. Codes for baseline measures

Code	Measure
ICD-9-CM: 327.23; ICD-10-CM: G47.33	Obstructive sleep apnea
ICD-9-CM: 162.xx, 163.xx, 197.0, 197.2, 231.1, 231.2, 235.7; ICD-10-CM: C33, C34, C38.4, C45.0, C78.0x, D02.1, D02.20, D02.21, D02.22. D38.1	Lung cancer
	Pneumothorax
ICD-9-CM: 512.0, 512.81, 512.82, 512.83, 512.84, 512.89, ICD-10-CM: J93.0, J93.11, J93.12, J93.81, J93.82, J93.83, J93.9	Spontaneous tension pneumothorax
ICD-9-CM: 512.81; ICD-10-CM: J93.11	Primary spontaneous pneumothorax
ICD-9-CM: 512.82; ICD-10-CM: J93.12	Secondary spontaneous pneumothorax
ICD-9-CM: 512.83; ICD-10-CM: J93.81	Chronic pneumothorax
ICD-9-CM: 512.84; ICD-10-CM: J93.82	Other air leak
ICD-9-CM: 512.89; ICD-10-CM: J93.83, J93.9	Other pneumothorax
ICD-9-CM: 530.11, 530.81, 787.1; ICD-10-CM: K21.0, K21.9, R12	Gastroesophageal reflux
ICD-9-CM: 415.0, 416.9; ICD-10-CM: I26.01, I26.02, I26.09, I27.81, I27.9	Cor pulmonale
HCPCS: G0424, G0128, G0237, G0238, G0239, S9473	Pulmonary rehabilitation
CPT: 94010-94799	Respiratory diagnostic services

ICD-9-CM/ICD-10-CM: International Classification of Diseases, 9th or 10th Revision, Clinical Modification; HCPCS: Healthcare Common Procedure Coding System; CPT: Current Procedural Terminology.

Supplementary Figure 1. Risk of respiratory-related hospitalization



Note: The adjusted hazard ratio generated from Cox PH regression analysis is 0.70 (95% CI: 0.64 - 0.76).

	At 6M		At 1Y		At 2Y		At 2.5Y	
	Cumulative Hospitalization Probability (95% CI)	At Risk	Cumulative Hospitalization Probability (95% CI)	At Risk	Cumulative Hospitalization Probability (95% CI)	At Risk	Cumulative Hospitalization Probability (95% CI)	At Risk
Treated	0.119 (0.110 - 0.130)	2480	0.196 (0.182 - 0.211)	1438	0.303 (0.282 - 0.326)	489	0.354 (0.327 - 0.382)	258
Matched Untreated	0.176 (0.165 - 0.188)	3046	0.266 (0.252 - 0.281)	2188	0.382 (0.365 - 0.400)	1047	0.424 (0.404 - 0.444)	524